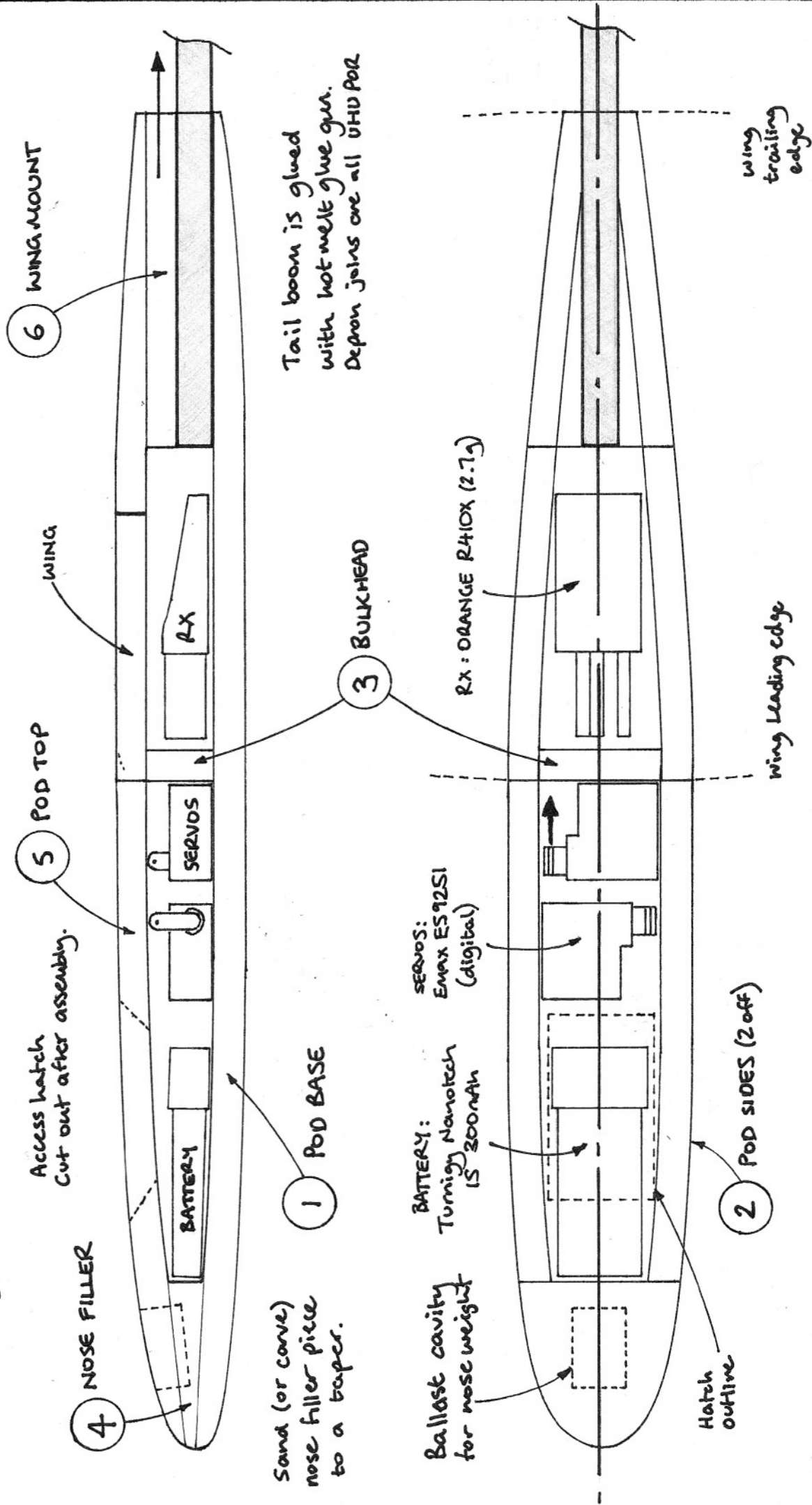


CANDY 30 - POD DETAILS

All sheeting is 6mm Depron

WING SPAN: 30" (0.762m)
 WING AREA: 120 in²
 FLYING WEIGHT: 2.75oz (78g)

Servo lines run through thin tubing inset into wing mount.

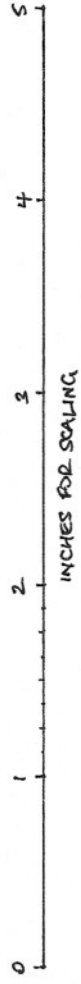


Sand (or coarse) nose filler piece to a taper.

BATTERY: Turnigy Nanotech 1S 300mAh
 SERVO: Emax ES92S1 (digital)

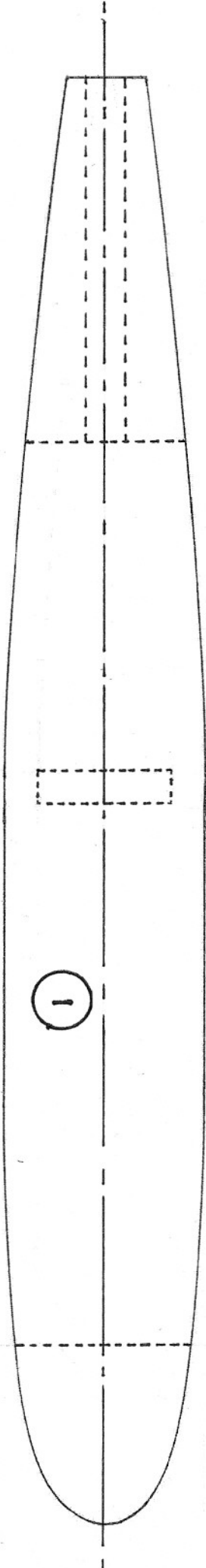
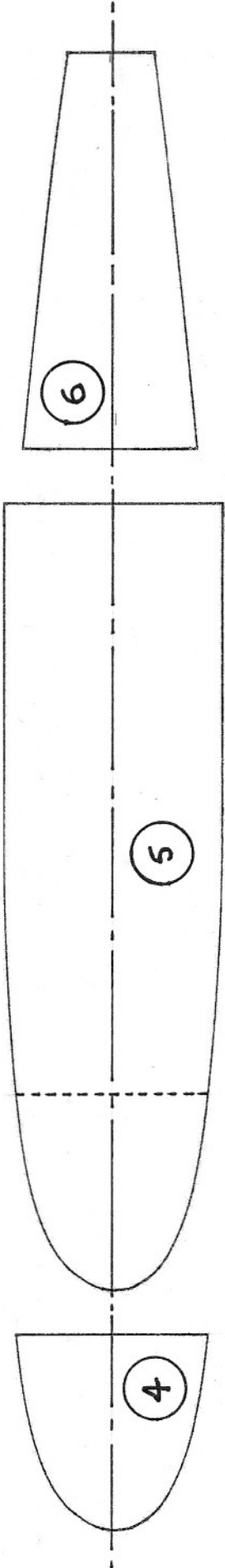
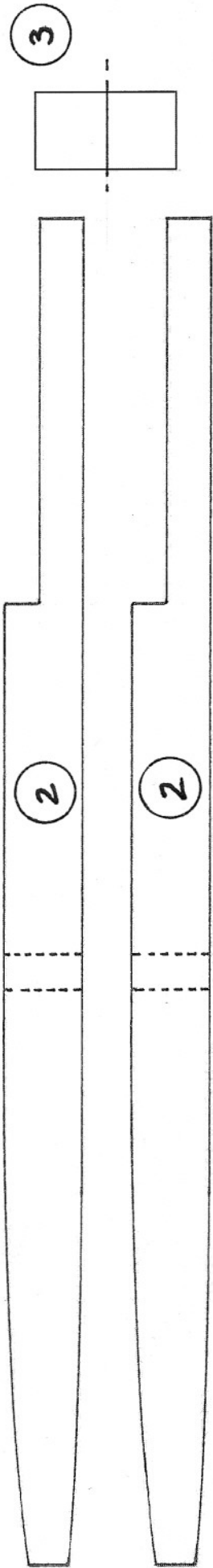
RX: ORANGE R410X (2.7g)

Tail boom is glued with hot melt glue gun. Depron joins are all UHU POR



J. Whitmore Feb '16

CANDY 30 - POD PARTS SHEET



Jon Whitmore Feb '16

CANDY 30 - LEFT WING PANEL

DIHEDRAL BREAK
Tape bottom
surface and
bend to 10°
CAREFULLY!

VERTICAL SPAR - 5 x 0.5mm Carbon strip

DIHEDRAL BRACE
from 1/16" ply

join line

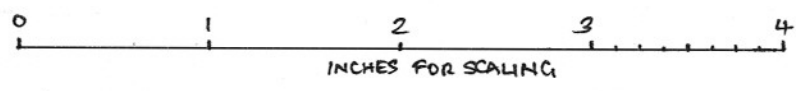
CUT WHOLE WING FROM 6mm DEPRON
Then cut along line of spar to insert.

THROWING PEG
Ø3mm carbon tube
bound to spar and
secured with CA

COVER WITH
PARCEL TAPE

join line

DIHERAL 10° - 2.5" below wingtips.



Jon Whitmore Feb '16

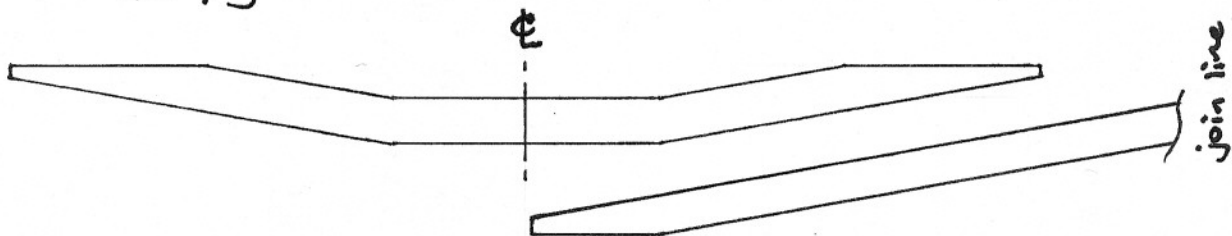
CANDY 30 - RIGHT WING PANEL

Leave square
to butt against
pod

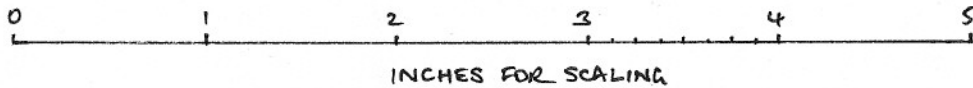
Tile wing panels together
and cut whole wing at once
then split along spar line

CG 1.75" from LE

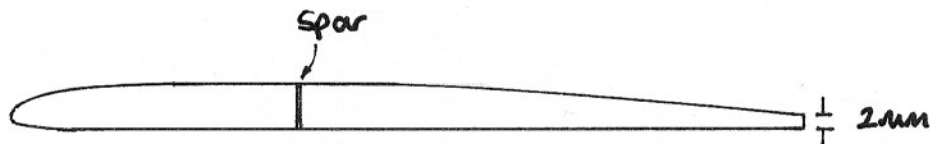
DIHEDRAL BRACE
From 1/16" ply



For maximum strength,
trim carbon spar as above



join line



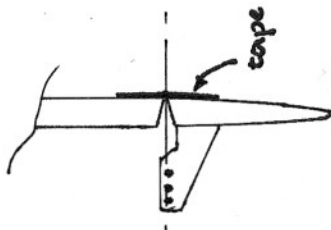
TYPICAL AIRFOIL SECTION

CANDY 30 - TAIL SURFACES

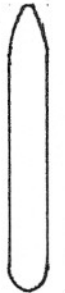
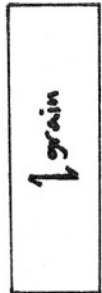
Tailplane weight (doped) 2.5g
 Fin weight (doped) 1.9g

TAILPLANE MOUNT

Vertical grained balsa
 (make as wide as tailboom)



Ensure hoks in control horn are aligned with hinge line!



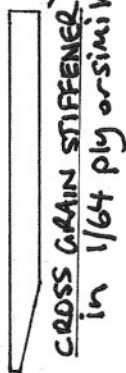
Tail incidence: -0.5°



SPRING from guitar E string



CONTROL HORN from 1/32" ply (2 off)



CROSS GRAIN STIFFENER in 1/64 ply or simulator

Mount 9.75" from wing TE

Radius leading edges

Balsa grain direction

TAILPLANE

3/32" Quarter grain balsa

FIN & RUDDER

3/32" Quarter grain balsa

Hinge control surfaces with 1/2" Blenderu tape.

Elevator throw: 6mm up/down. Control horn
 Rudder throw: 10-12mm each side.

Rudder control horn should be on the righthand side for a Righthanded thrower (OPPOSITE the throwing leg)

Cut to suit tailboom width

Grain

spring

control horn