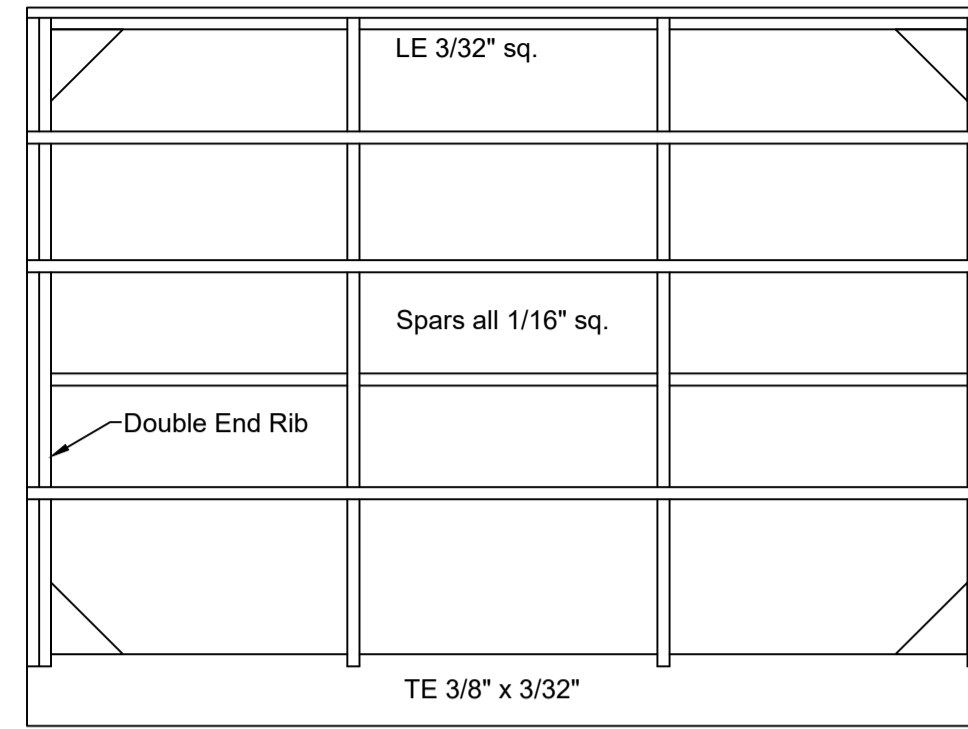
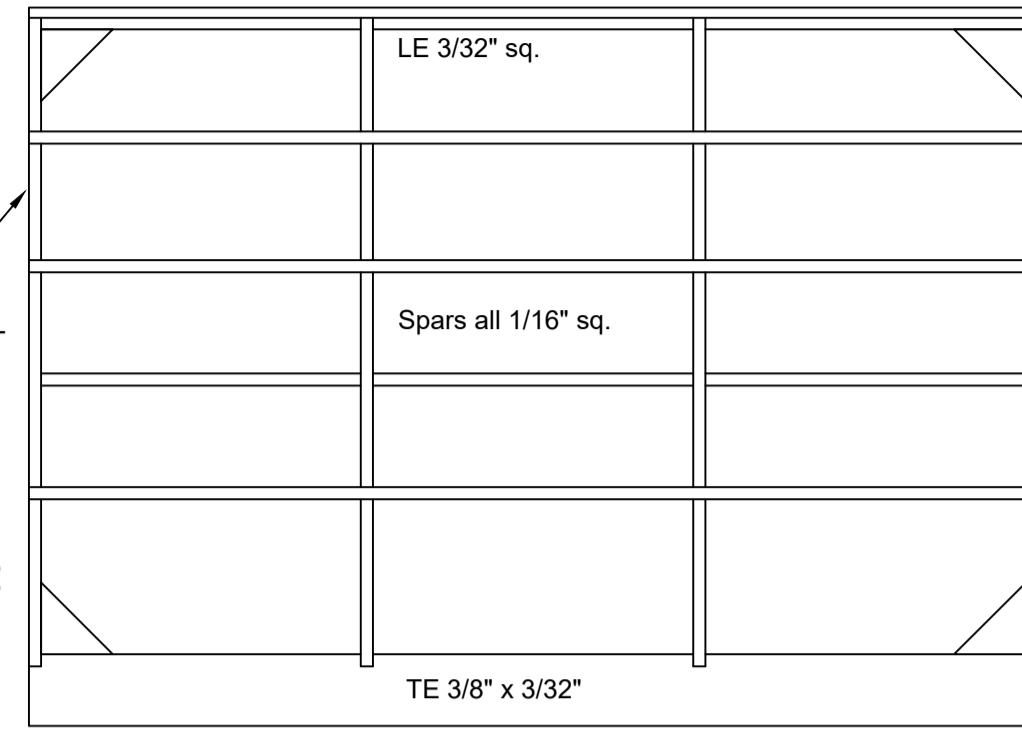


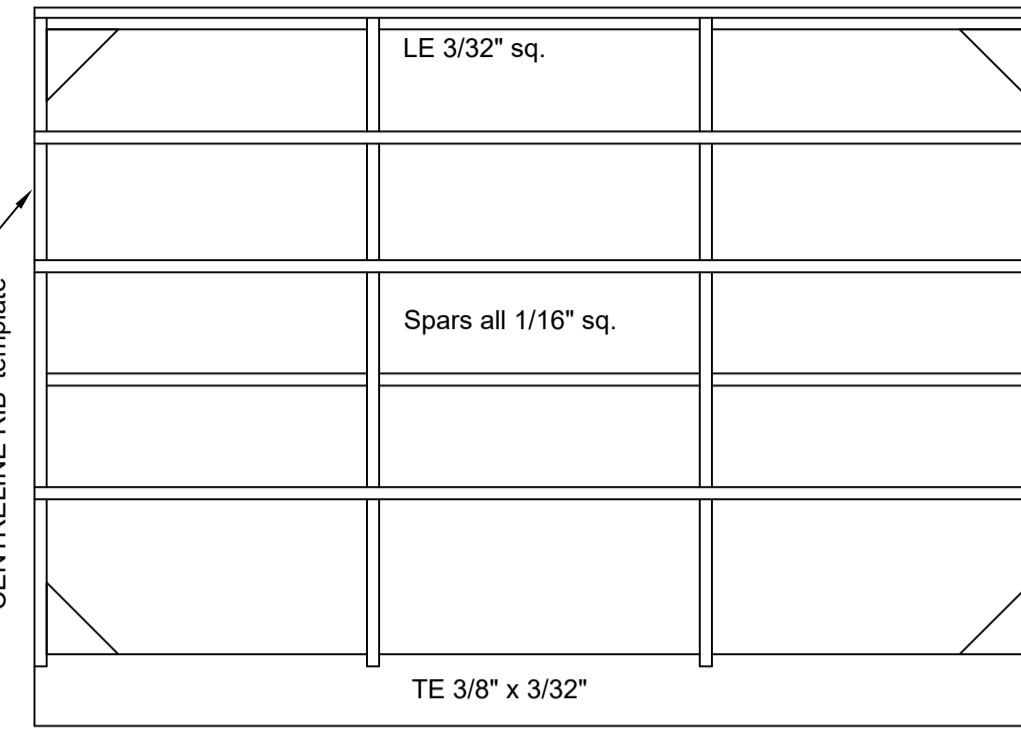
Left Outer Wing



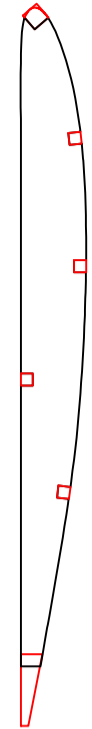
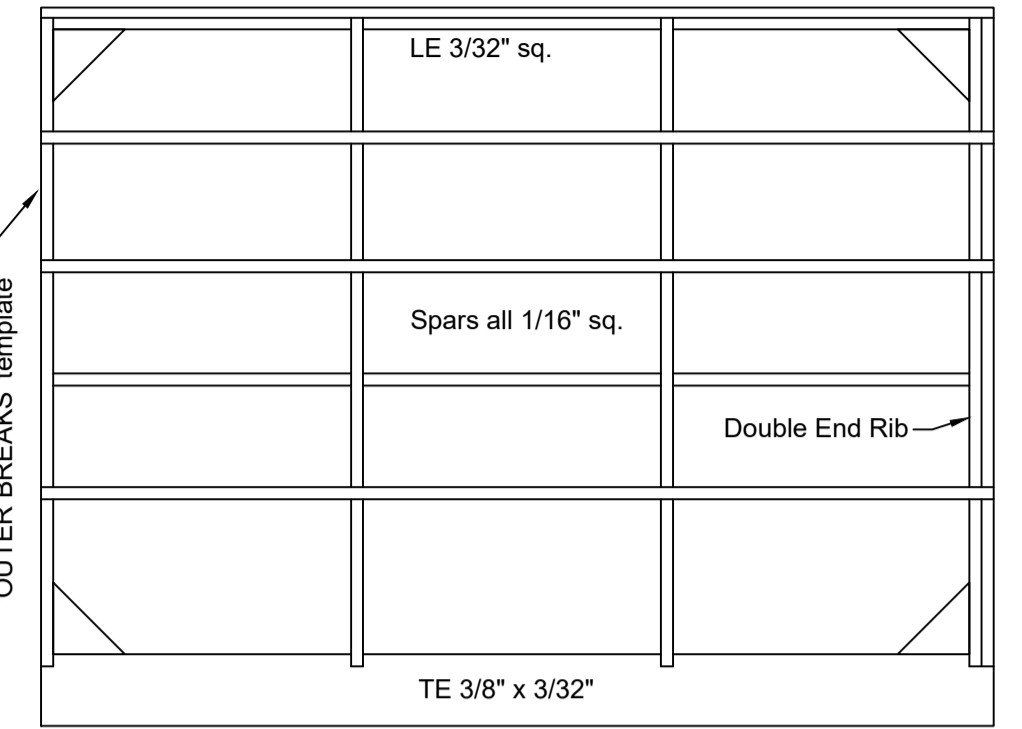
Left Inner Wing



Right Inner Wing



Right Outer Wing



Ferry 500

Wing and Tailplane Plan

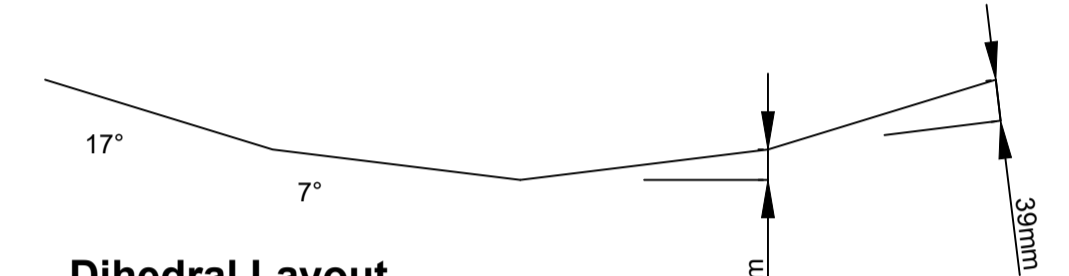
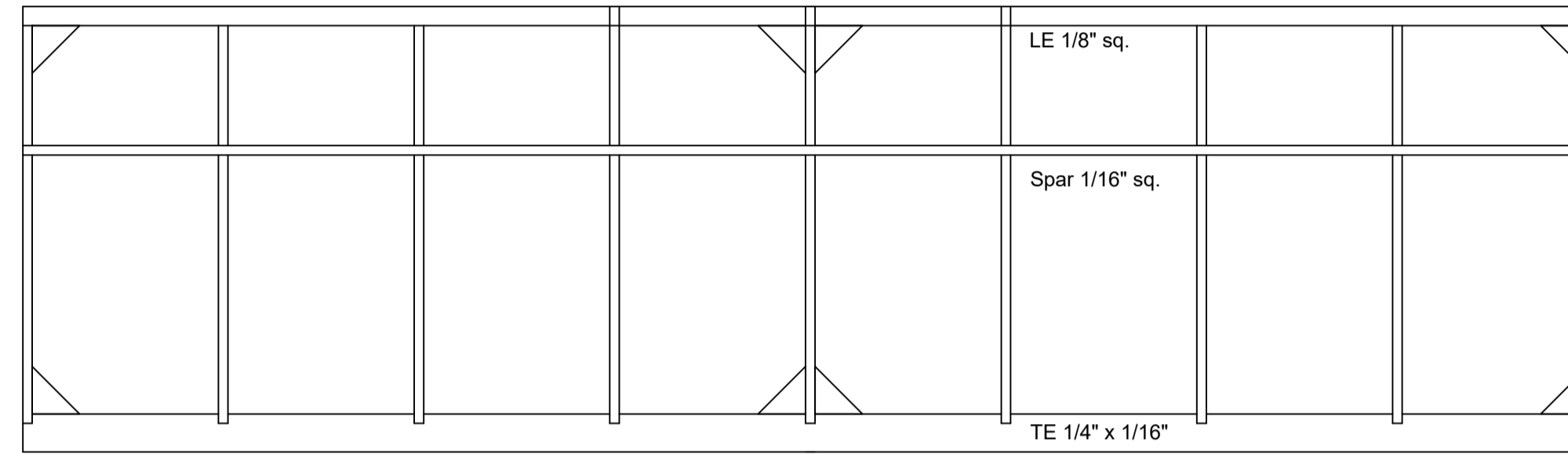
For Peterborough E20 2018

Span 20"
Chord 3.75"

This plan is for the laser cut version of Ian Middlemiss's Ferry 500 design.
(See [www.http://peterboroughmfc.org/membersmodels2014/01-E20.htm](http://peterboroughmfc.org/membersmodels2014/01-E20.htm) for more details and fuselage lay out.)



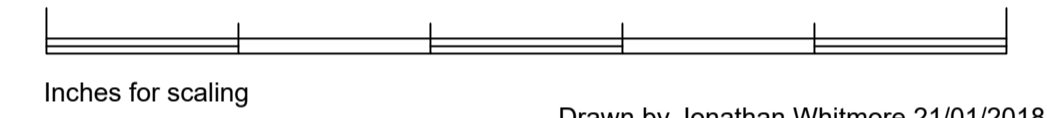
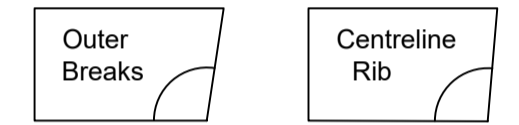
Tailplane



Dihedral Layout

Projected span 503mm (19.8")
EDA 15°

Dihedral Rib Angle Templates



Drawn by Jonathan Whitmore 21/01/2018